

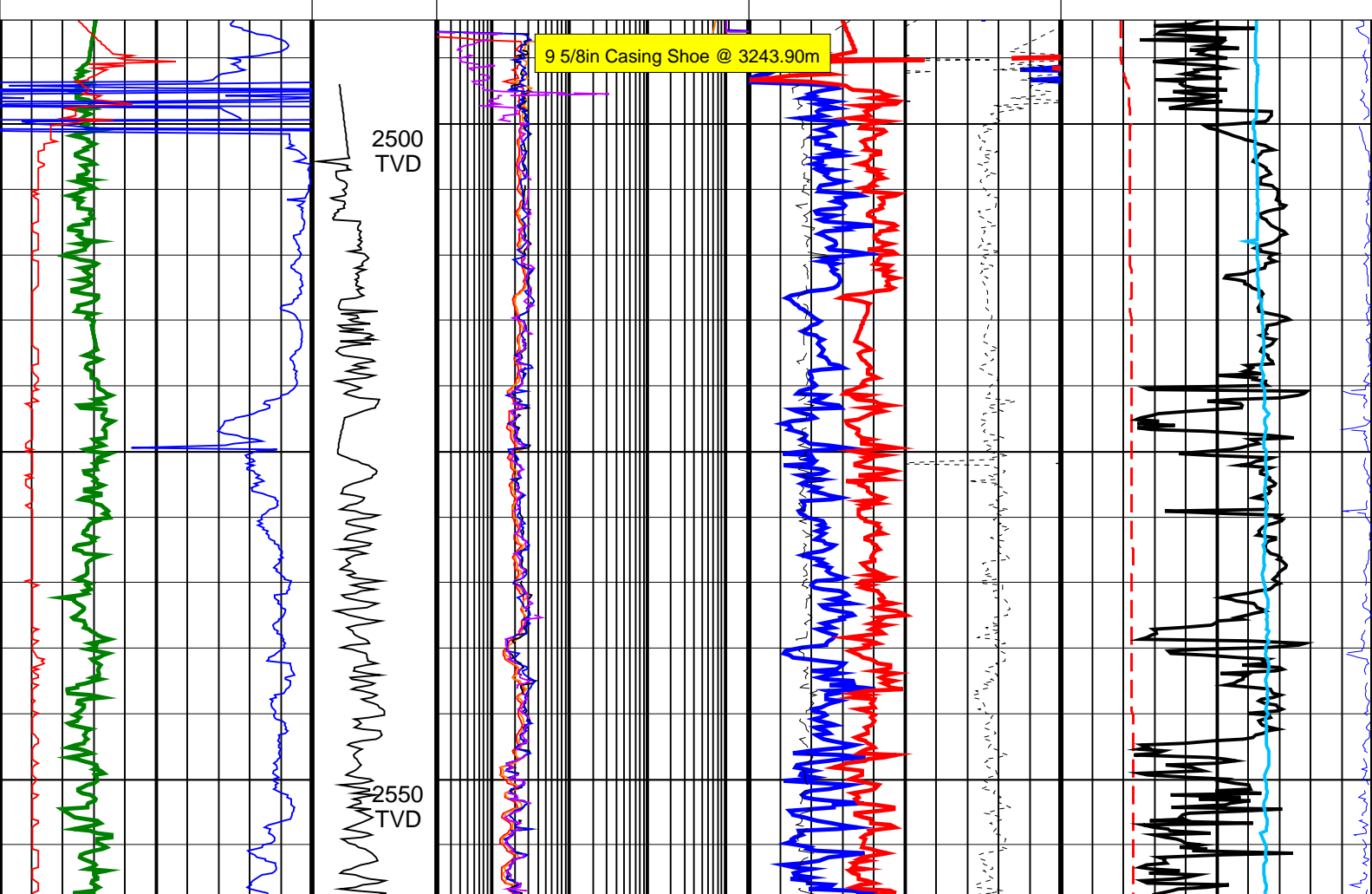
Elver-1 EcoScope Service RT 500TVD

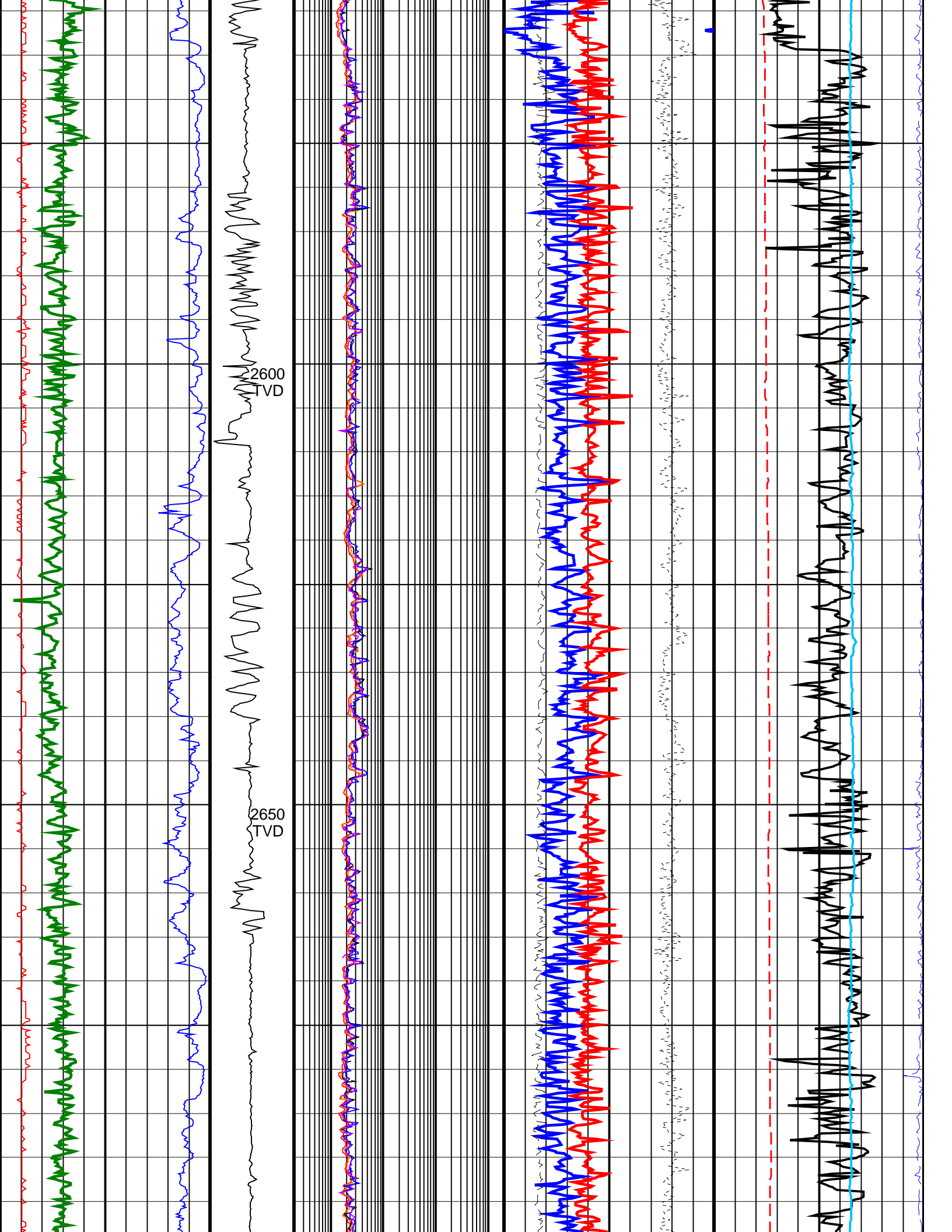
Format: ECO-SON-GVR_500TVD_RT

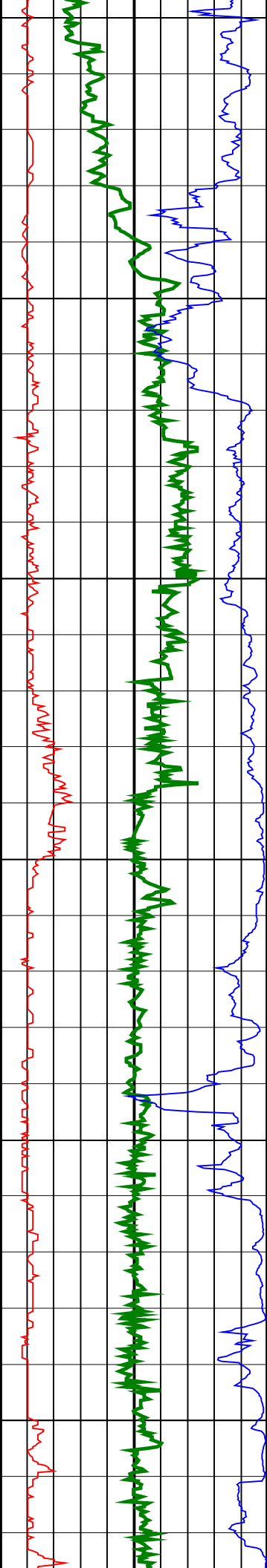
Vertical Scale: 1:500

Graphics File Created: 06-Jan-2009 15:28

		Shallow Button Resistivity, Real-Time (RES_BS_RT) 0.2 (OHMM) 2000				Equivalent Circulating Density, Real-Time (ECD_ECO_RT) 0 (G/C3) 2	
		Deep Button Resistivity, Real-Time (RES_BD_RT) 0.2 (OHMM) 2000					
Ultrasonic Caliper, Average Diameter, Real-Time, Recomputed at Surface (UCAV_ECO_RT) 8 (IN) 13		Ring Resistivity, Real-Time (RES_RING_RT) 0.2 (OHMM) 2000		Photoelectric Factor, Bottom, Real-Time, Computed Downhole (PEB_DH_ECO_RT) 0 (----) 10	Bulk Density Correction, Bottom, Real-Time Computed Downhole (DRHB_DH_ECO_RT) -0.25 (G/C3) 0.25	Delta-T Compressional, Real-Time (DTCO_RT) 40 (US/F) 140	
Gamma Ray, Average, Real-Time (GRMA_ECO_RT) 0 (GAPI) 200		ARC Phase Shift Resistivity 40 inch at 2 MHz, Real-Time (P40H_ECO_RT) 0.2 (OHMM) 2000		Bulk Density, Bottom, Real-Time, Computed Downhole (ROBB_DH_ECO_RT) 1.95 (G/C3) 2.95		Coherence at Compressional Peak, Real-Time (CHCO_RT) -9 (----) 1	
ROP*5 (ROP5) 200 (M/HR) 0		MWD Collar RPM (CRPM_RT) (RPM) 0 400	ARC Phase Shift Resistivity 16 inch at 2 MHz, Real-Time (P16H_ECO_RT) 0.2 (OHMM) 2000	Best Thermal Neutron Porosity, Average, Real-Time (BPHI_ECO_RT) 45 (PU) -15		Downhole Annulus Temperature, Real Time, Computed Downhole (DHAT_DH_ECO_RT) 0 (DEGC) 200	



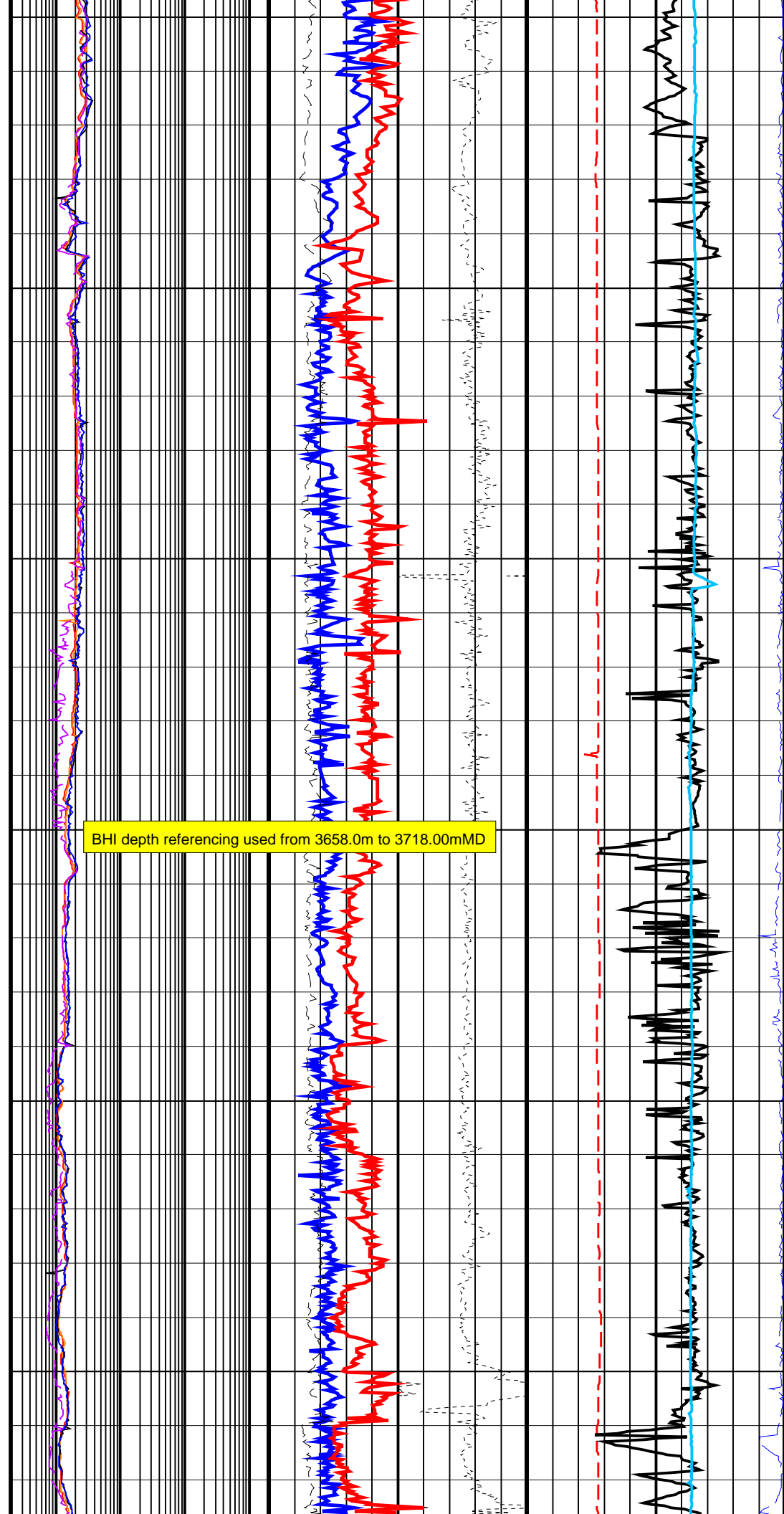




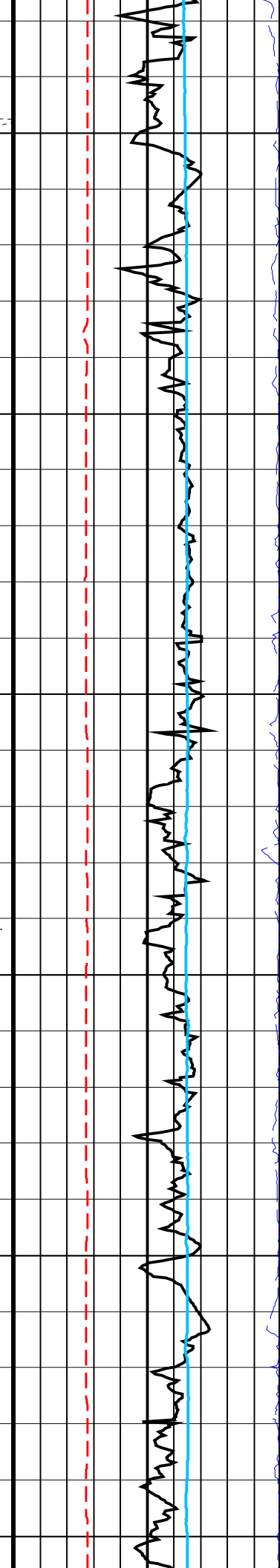
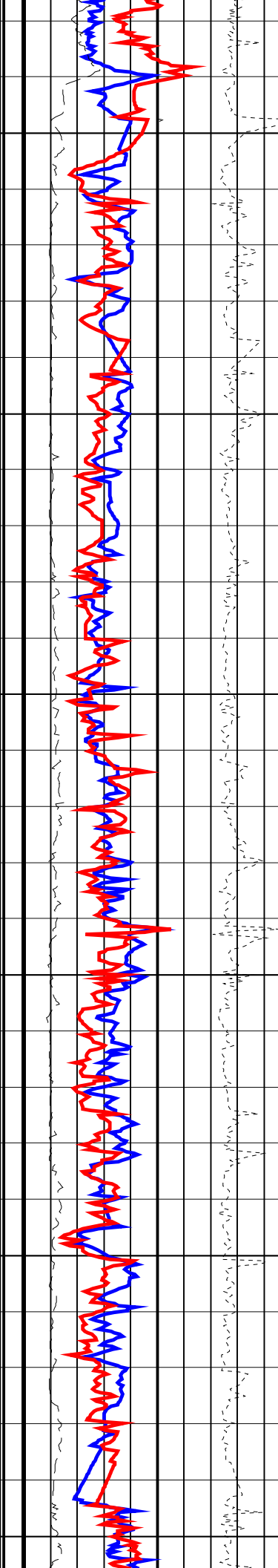
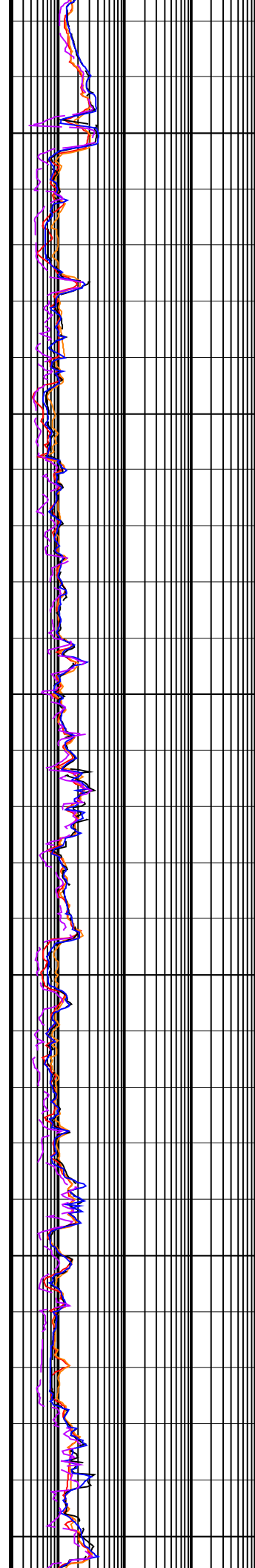
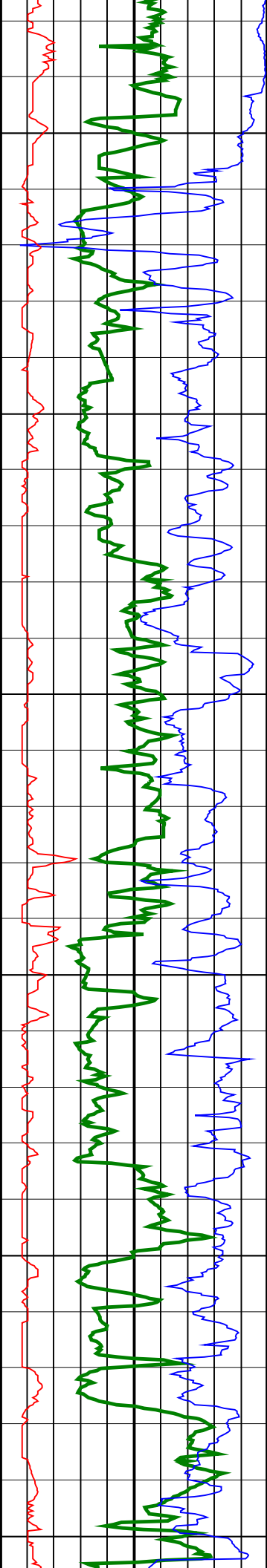
2700
TVD

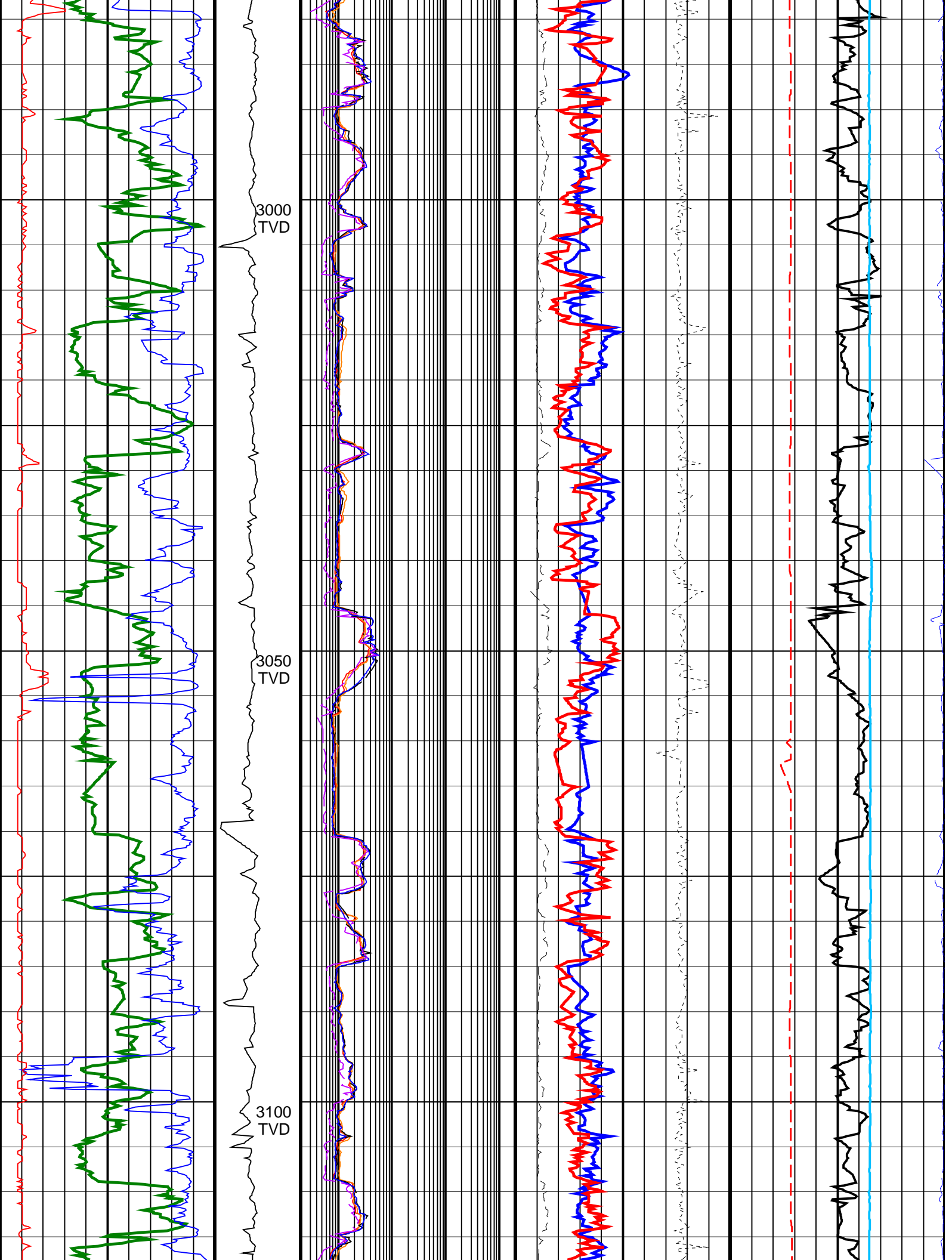
2750
TVD

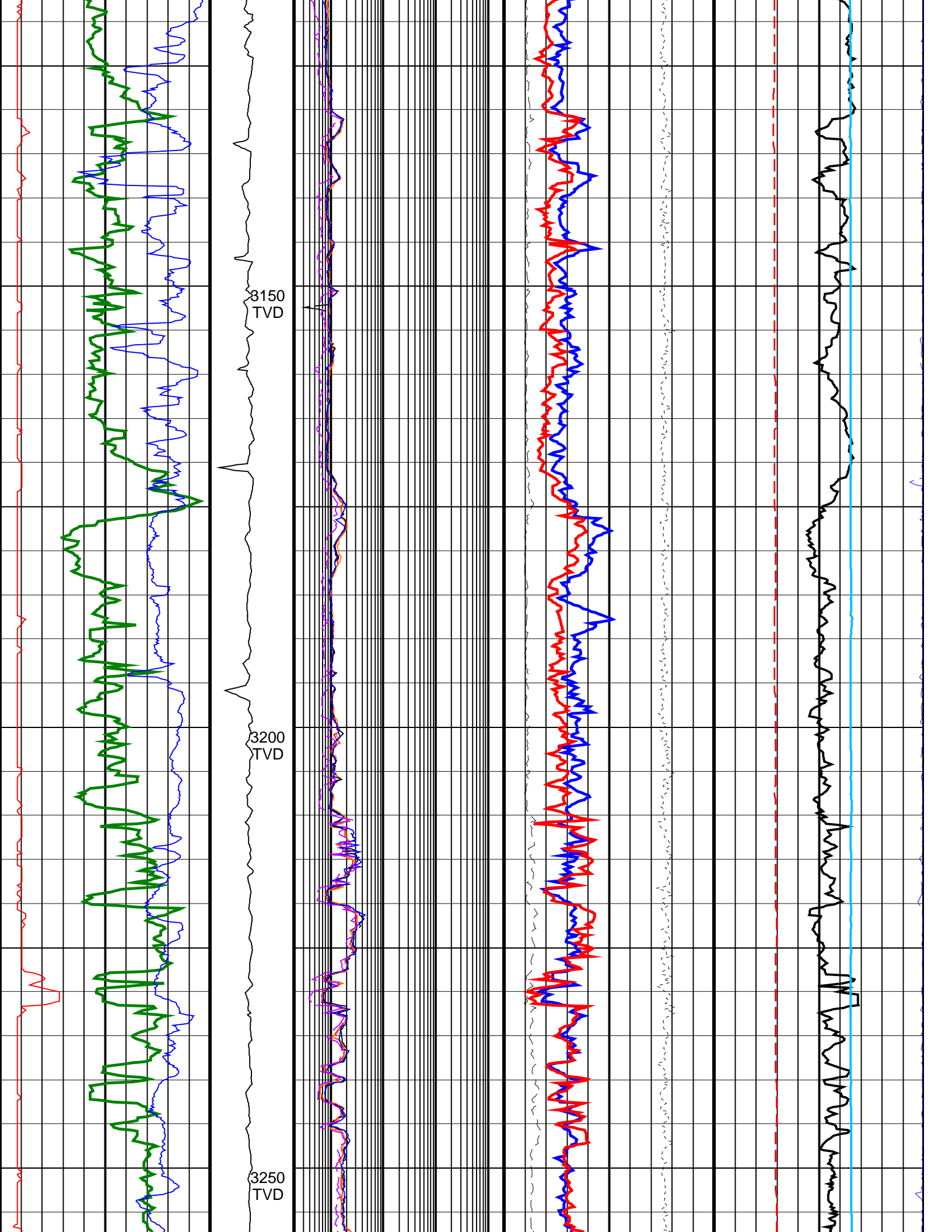
2800
TVD

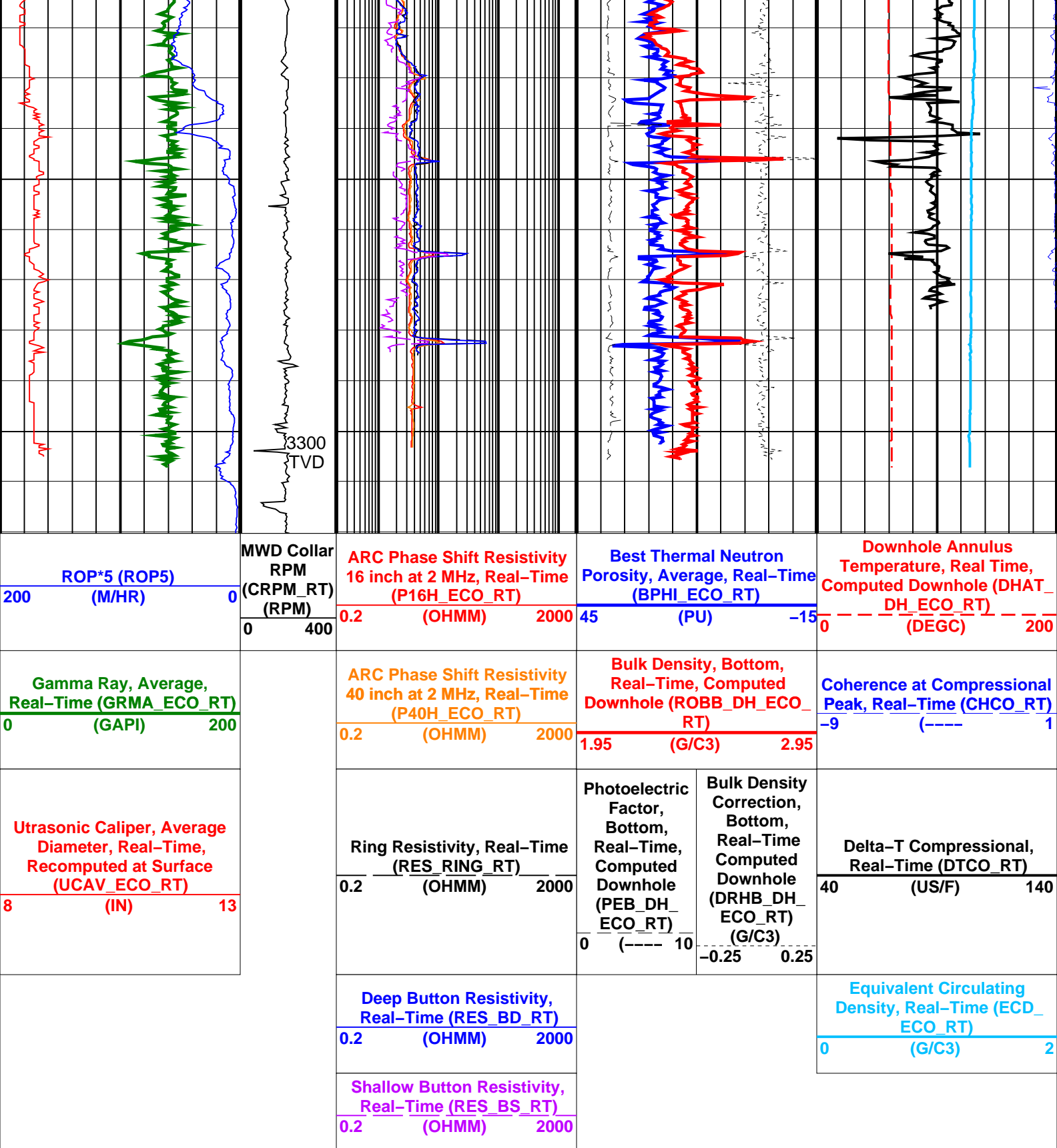


BHI depth referencing used from 3658.00m to 3718.00mMD









IDEAL Version: ID13_OC_08

IDF